



Electron Impact (EI) Ion Source

## Electron Impact (EI) Ion Source

The recommended cleaning material for the EI ion source is abrasive, aluminum oxide powder.

Do not immerse filaments or lens insulators in solvent. If insulators are dirty, clean them with a cotton swab dampened with reagent-grade methanol. If that does not clean the insulators, replace them.



### WARNINGS & CAUTION

**Important:** Do not abrasively or ultrasonically clean the insulators.

Abrasively clean the surfaces that contact the sample or ion beam. Use an abrasive slurry of alumina powder and reagent-grade methanol on a cotton swab. Use enough force to remove all discoloration. Polishing the parts is not necessary; small scratches will not harm performance. Abrasively clean discoloration where electrons from filaments enter the source body.

Take care to avoid contaminating cleaned and dried parts. Put on new, clean gloves before handling the parts. Do not put the cleaned parts on a dirty surface. Place them only on clean, lint-free cloths.

### 5977/5975/5973 MSD Electron Impact Ion Source Parts (EI)

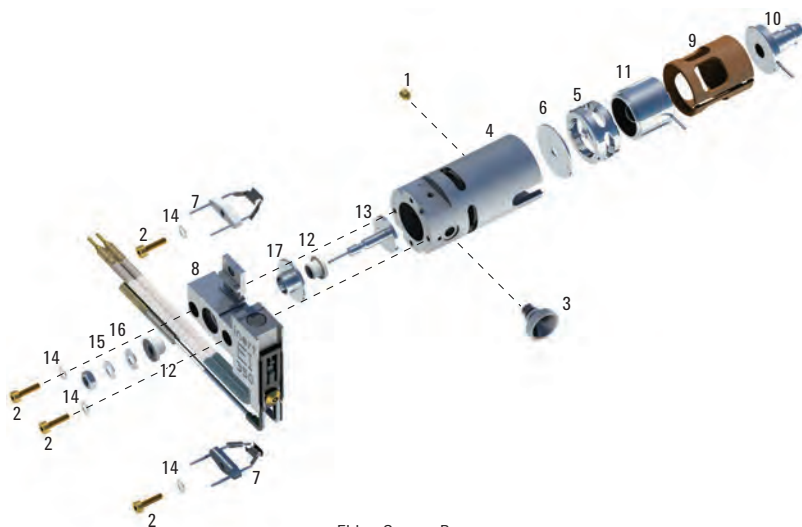
Item	Description	Part No.
1	Set screw for lens stack	G1999-20022
2	Cap screw, gold plated	G1999-20021
3	Transfer line socket	G1099-20136
4	Ion source body	G1099-20130
5	Drawout cylinder	G1072-20008
6	Drawout plate, 3 mm	05971-20134
	Drawout plate, 6 mm	G3163-20530
7	Filament assembly, high temperature (EI)	G7005-60061
8	Repeller assembly, Agilent 5977 MSD, stainless steel EI 350 ion source	G3870-60172
9	Lens insulator	G3170-20530
10	Entrance lens assembly	G3170-20126
11	Ion focus lens	05971-20143
12	Repeller insulator	G1099-20133
13	Repeller	G1099-20132
14	Washer, SPR CRVD, 1.6 to 1.8 mm id, 4 mm od, SS	3050-1375
15	Washer, SPR BLVL 4 .125 in id .25 in od	3050-1301
16	Washer, for Repeller M3	3050-0891
17	Repeller block insert	G3870-20135



Lens insulator, G3170-20530



Repeller insulator, G1099-20133



EI Ion Source Parts