

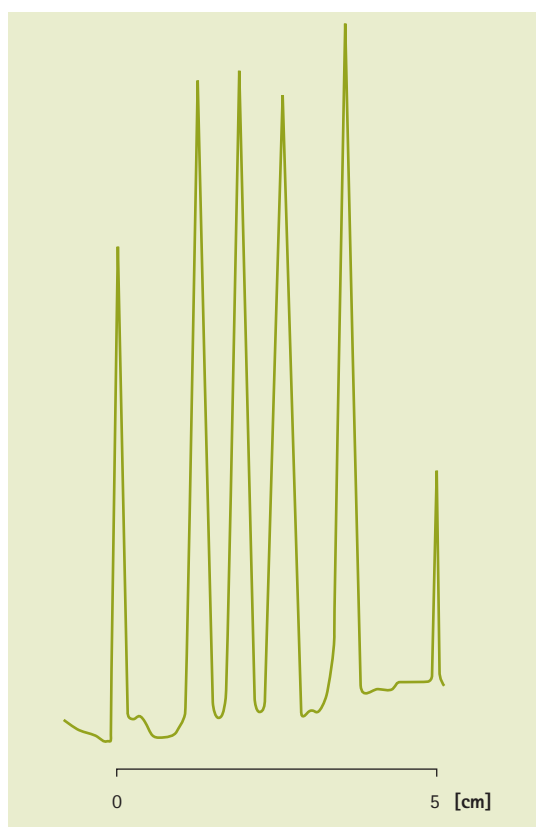
## Ordering information – HPTLC RP-modified silica gel 60, glass backed

Product	Ordering No.	Format [cm]	Contents of one package
HPTLC silica gel 60 RP-2 F <sub>254s</sub>	1.13726.0001	10 x 10	25 plates
HPTLC silica gel 60 RP-8 F <sub>254s</sub>	1.13725.0001	10 x 10	25 plates
HPTLC silica gel 60 RP-18	1.05914.0001	20 x 10	25 plates
HPTLC silica gel 60 RP-18 W	1.14296.0001	20 x 10	25 plates
HPTLC silica gel 60 RP-18 F <sub>254s</sub>	1.13724.0001	10 x 10	25 plates
HPTLC silica gel 60 RP-18 F <sub>254</sub>	1.16225.0001	10 x 20	50 plates
HPTLC silica gel 60 RP-18 W	1.13124.0001	10 x 10	25 plates

F<sub>254</sub>: Green fluorescent indicator | F<sub>254s</sub>: Blue fluorescent indicator | Layer thickness: 200 µm | W: Fully wettable with water (can be used even with 100 % water in solvent system)

## Separation of gallic acid and esters on HPTLC silica RP-18 WF<sub>254</sub>

<b>Sample</b>	1. Dodecyl gallate 2. Butyl gallate 3. Ethyl gallate 4. Methyl gallate 5. Gallic acid
<b>Sample volume</b>	200 nl
<b>Mobile phase</b>	1 N acetic acid / methanol (70+30)
<b>Migration distance</b>	5 cm
<b>Detection</b>	UV 265 nm (TLC/HPTLC Scanner, Camag)



RP-modified silica plates are especially suited for the analysis of basic or acids substances as demonstrated by the good separation of gallic acid and its esters on HPTLC silica RP-18 WF<sub>254</sub>.