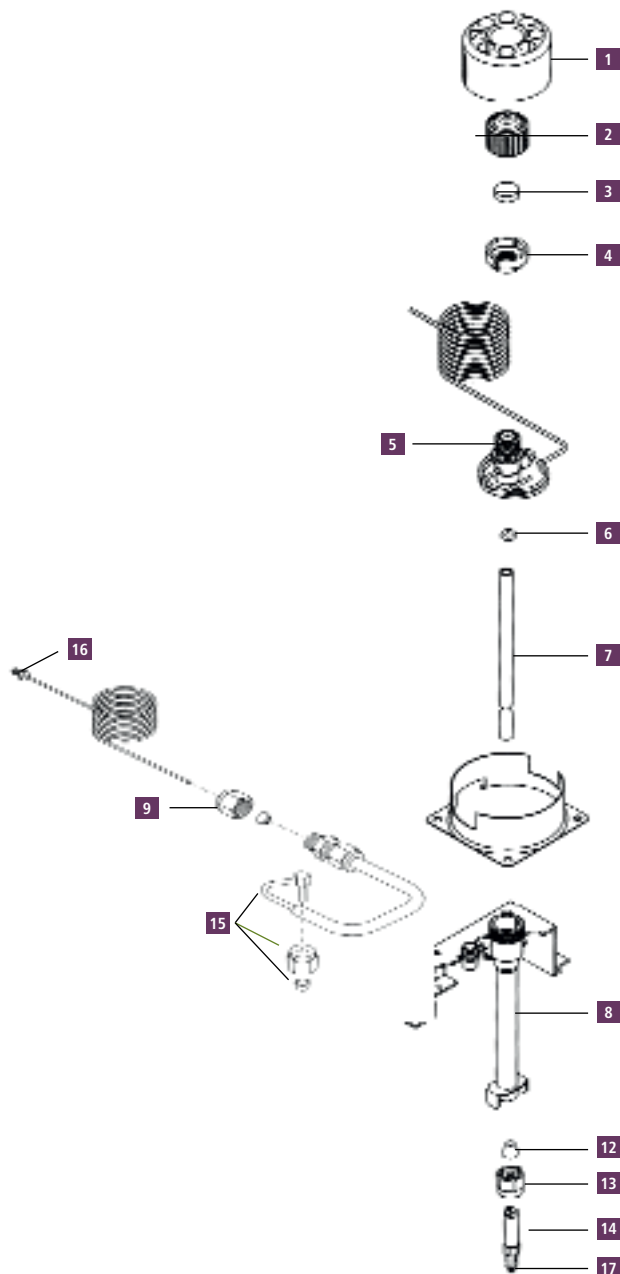


# Capillary Injector Replacement Parts\*



Description	Part No.
<b>1</b> Injector Cover	<b>N6101482</b>
<b>2</b> Septum Cap	<b>N6100153</b>
<b>3</b> PerkinElmer Green Injection Septum (pkg. 50)	<b>N6621028</b>
<b>4</b> Injector Top Nut	<b>N6101358</b>
<b>5</b> Injector Head	<b>N6100158</b>
O-Ring, Silicone for Glass Liner (pkg. 10) Maximum injector temperature 250 °C	<b>N6101374</b>
O-Ring, Graphite for Glass Liner (pkg. 5) Maximum injector temperature 450 °C	<b>N6101378</b>
<b>6</b> O-Ring, KALREZ® for Glass Liner (pkg. 1) Maximum injector temperature 450 °C	<b>N9302782</b>
O-Ring, Viton® for Glass liner (pkg. 1) Maximum injector temperature 250 °C, recommended for use with Mass Spec. ships with instrument	<b>N9302783</b>
Quartz Liner (2 mm) for Splitless Operation	<b>N6121002</b>
Quartz Liner (4 mm) for Split Operation or Large Volume Splitless Injection	<b>N6121001</b>
Glass Liner (2 mm) for Splitless Operation	<b>N6101372</b>
<b>7</b> Glass Liner (4 mm) for Split Operation	<b>N6101052</b>
Deactivated Liner for Splitless Operation 2 mm, packed with wool. (pkg. 5)	<b>N6121021</b>
Deactivated Liner for Split Operation 4 mm, packed with wool. (pkg. 5)	<b>N6121020</b>
Deactivated Uniliner 4 mm, packed with wool. (pkg. 5)	<b>N6121022</b>
<b>8</b> Injector Body	<b>N6100047</b>
<b>9</b> 1/8 in. Swagelok™ Nut Brass (pkg. 5)	<b>N9300056</b>
<b>10</b> Restrictor**	<b>N6101034</b>
<b>11</b> 1/8 in. Graphite/Vespel Ferrule (pkg. 10)*	<b>09920301</b>
<b>12</b> 1/4 in. Graphite Ferrule (pkg. 10)	<b>09920140</b>
<b>13</b> 1/4 in. Swagelok Nut, Stainless Steel (pkg. 5)	<b>N9300055</b>
<b>14</b> Injector Adapter	<b>N6100157</b>
<b>15</b> Charcoal Trap	<b>N6100275</b>
Charcoal Trap for PPC Version*	<b>N6100331</b>
<b>16</b> Split Vent Tube	<b>N6100159</b>
<b>17</b> Column Nut 1/16 in. Long length for reversed ferrule (pkg. 5)	<b>09903392</b>

\* Not suitable for Clarus 590 and 690 models.\*\* Not shown