

## Demountable Quartz Torches

Avio Torch  
Part No. **N0790131**



Demountable design using one-piece quartz tubing for plasma and auxiliary gas flow. Torches without slots are recommended for organic solvents. 1-slot torches are the standard torch for aqueous solutions. 3-slot torches are typically used for organic analysis.

ICP Model	No. of Slots	Part No.
Avio 200/500	1	<b>N0790131</b>
Avio 200/500 Organics (not ceramic)	3	<b>N0790249</b>
8x00 HybridXLT (ceramic tip)	1	<b>N0780128</b>
8x00	0	<b>N0780133</b>
8x00 (Standard)	1	<b>N0780130</b>
8x00	3	<b>N0780132</b>
2x00/4x00/5x00/7x00 DV	0	<b>N0770343</b>
2x00/4x00/5x00/7x00 DV (short ver.)	0	<b>N0770344</b>
2x00/4x00/5x00/7x00 DV	1	<b>N0770338</b>
2x00/4x00/5x00/7x00 DV	3	<b>N0772005</b>
2x00/4x00/5x00/7x00 DV Organics	3	<b>N0772008</b>
4300V/5300V/7300V	3	<b>N0771500</b>
7300 V Organics	3	<b>N0771561</b>
3x00 DV	1	<b>N0691662</b>
3000 SCX/3x00 XL	0	<b>N0695379</b>
3000/3000 SCR/3x00 RL	1	<b>N0690568</b>
3000/3000 SCR/3x00 RL	3	<b>N0681690</b>

### Torch Bonnet

The torch bonnet is used as a spacer between the torch and RF load coil.



ICP Model	Part No.
2x00/4x00/5x00/7x00	<b>N0775289</b>

### Copper Ignitor Tape

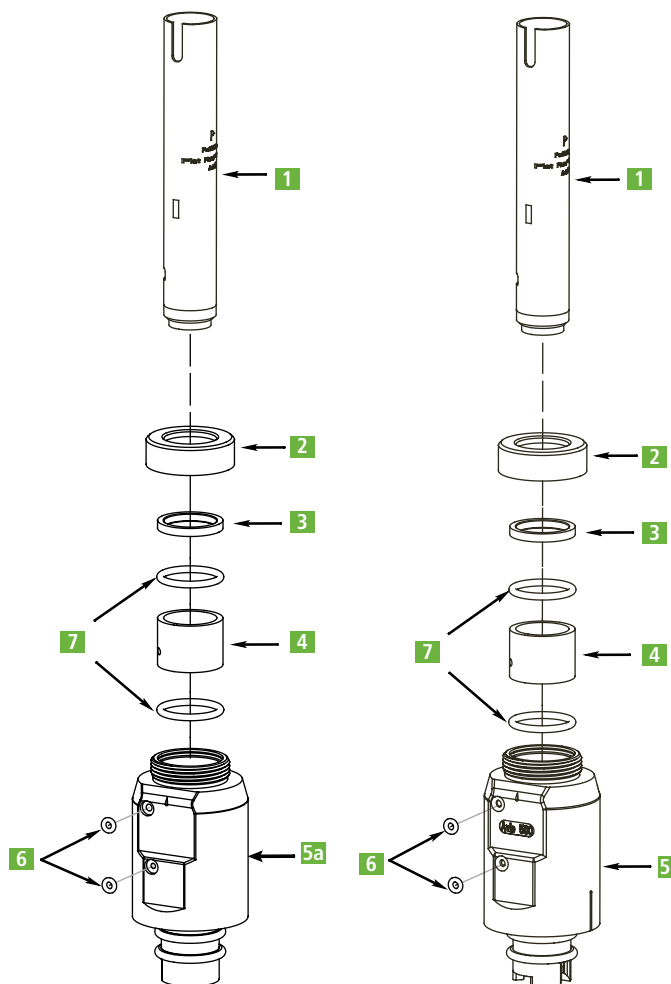


ICP Model	Qty.	Part No.
8x00	50	<b>N0781097*</b>
2x00/4x00/5x00/7x00	120	<b>N0775297</b>

\*Ignitor tape for Optima and HybridXLT Torches

### Torch Body Assemblies

ICP Model	Part No.
Avio 200	<b>N0790138</b>
Avio 500	<b>N0810128</b>



Avio 200 Torch Body Assembly  
Part No. **N0790138**

Avio 500 Torch Body Assembly  
Part No. **N0810128**

### Torch Body Assembly Replacement Parts

Description	Part No.
<b>1</b> Torch Glass	<b>N0790131</b>
<b>2</b> Knurled Nut	<b>N0776027</b>
<b>3</b> Washer	<b>N0776028</b>
<b>4</b> Spacer	<b>N0791125</b>
<b>5a</b> Cassette for Avio 200 Torch Body Assembly	<b>N0790214</b>
<b>5b</b> Cassette for Avio 500 Torch Body Assembly	<b>N0810214</b>
<b>6</b> O-Ring Color Coded Blue	<b>N0791334</b>
<b>7</b> O-Ring	<b>09902223</b>