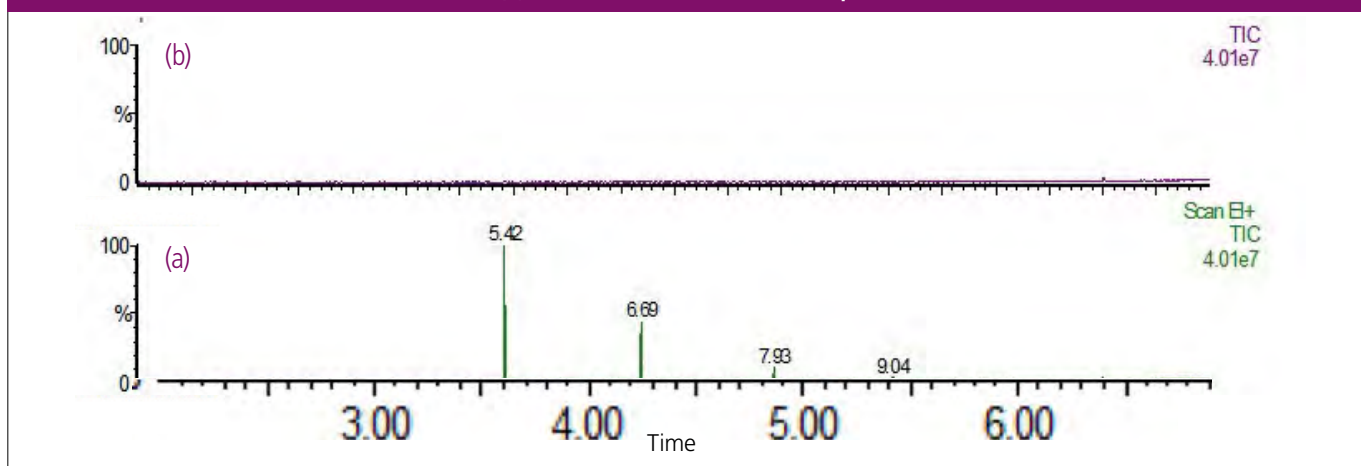


NEW

Ultra Low Bleed Septa

Septa quality, as well as vial quality, is important to ensure rugged and reproducible analytical results, day in day out. PerkinElmer's range of ultra-low bleed septa offers the ultimate in purity and inertness, (figure 4). Eliminate potential contamination from septa which can lead to interferences, inaccuracies and failures which ultimately effects lab productivity. A range of septa combinations area available for standard analytical and headspace applications. The 1.3 mm thick septa are recommended for SPME applications.

Figure 4: Comparison of Headspace Septa by GC (a) PerkinElmer Standard HS Septa. (b) PerkinElmer Ultra Low Bleed Septa.



2 mL Caps with Ultra Low Bleed Septa

Neck ID Size (mm)	Description	Material	Closure Type	Pkg.	Part No.
9	PTFE/silicone	Blue polypropylene	Screw	100	N9306362
9	PTFE/silicone	Blue polypropylene	Screw	1000	N9306363
9	PTFE/silicone – pre split	Blue polypropylene	Screw	100	N9306364
9	PTFE/silicone – pre split	Blue polypropylene	Screw	1000	N9306365
11	PTFE/Silicone (red/white)	Aluminium (silver)	Crimp	100	N9304148
11	PTFE/Silicone (red/white)	Clear (polypropylene)	Snap	100	N9304149
11	PTFE/Silicone (red/white)	Clear (polypropylene)	Snap	1000	N9304185

Headspace Caps with Ultra Low Bleed Septa

Septa Type	Cap Type	Closure Type	Pkg.	Part No
PTFE/Silicone (blue/white) 1.5 mm thick	Bi-Metal Cap	Crimp	100	N9304181
PTFE/Silicone (blue/white) 1.5 mm thick	Bi-Metal Cap	Crimp	1000	N9304182
PTFE/Silicone (blue/white) 1.5 mm thick	Gold Aluminium Cap	Crimp	100	N9304183
PTFE/Silicone (blue/white) 1.5 mm thick	Gold Aluminium Cap	Crimp	1000	N9304184
PTFE/Silicone (blue/white) 1.5 mm thick	Aluminium Magnetic Cap	Screw	100	N9304175
PTFE/Silicone (blue/white) 1.5 mm thick	Aluminium Magnetic Cap	Screw	1000	N9304176
PTFE/Silicone (red/white) 1.3 mm thick	Aluminium Magnetic Cap	Screw	100	N9304177
PTFE/Silicone (red/white) 1.3 mm thick	Aluminium Magnetic Cap	Screw	1000	N9304178
PTFE/Silicone (white/blue) 1.3 mm thick	Aluminium Magnetic Cap	Screw	100	N9304179
PTFE/Silicone (white/blue) 1.3 mm thick	Aluminium Magnetic Cap	Screw	1000	N9304180