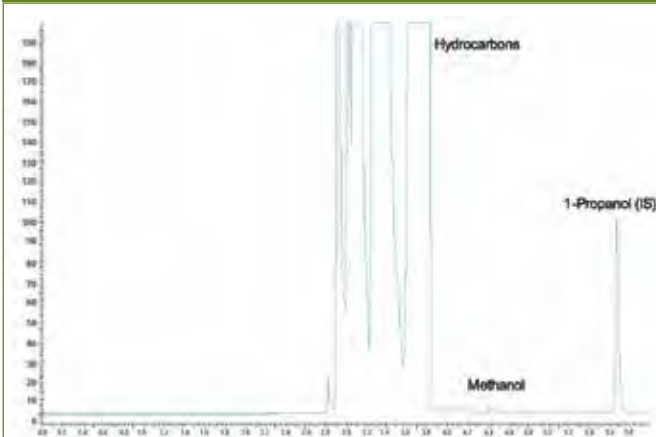


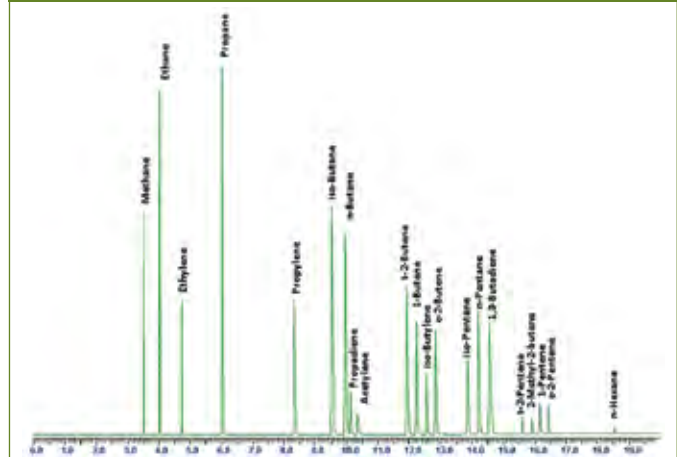
Arnel Analyzer Application Highlights

Methanol in Crude Oils According to ASTM D7059-04 Using a Clarus GC with S-Swafer Micro-Channel Flow Technology.



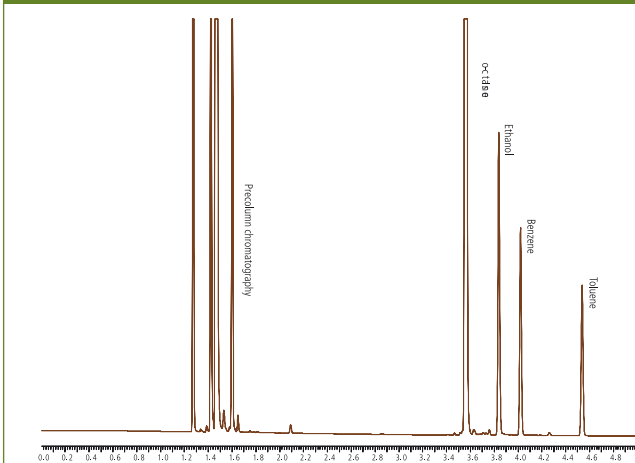
Column: Elite-1 30 m x 0.53 mm x 5.0 μ m Part No. **N9316052**
S-Swafer Part No. **N6520272**

The Determination of C2 to C5 Hydrocarbons in Finished Gasolines using the PerkinElmer Clarus 680 GC with Swafer Technology.



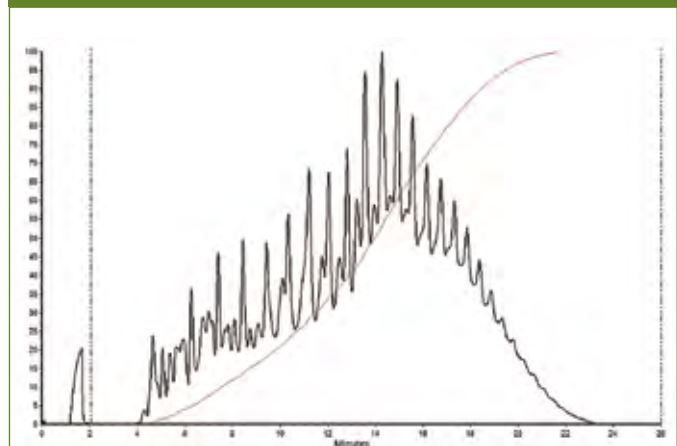
Column: Elite-WAX, 30 m x 0.25 mm x 0.5 μ m Part No. **N9316404**
and Al_2O_3 PLOT/ Na_2SO_4 50 m x 0.32 mm Part No. **N6107777**
S-Swafer Part No. **N6520272**

The Determination of Benzene and Toluene in Finished Gasolines Containing Ethanol Using the PerkinElmer Clarus GC with Swafer Technology.



Column: Elite-1, 30 m x 0.25 mm x 0.25 μ m Part No. **N9316010**
and COL-Elite-TCEP 60 m 0.25 mm 0.40 μ m Part No. **N6107760**
S-Swafer Part No. **N6520272**

Fast Simulated Distillation Analysis by Modified ASTM[®] D2887, D6352 and D7169.



Column: 10 m x 0.53 mm x 2.65 μ m MXT-2887 Part No. **NR213000**