

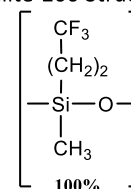
Elite-200

Elite-200 columns are comprised of a (trifluoropropyl)-methylpolysiloxane stationary phase that has a unique selectivity which changes elution orders and resolves compounds that phenyl, cyano, or Carbowax® phases cannot. These columns have accomplished many difficult separations not possible on any other bonded stationary phase. Many analysts consider these the best, most inert mid-polarity columns available. The Elite-200 column offers exceptional thermal stability, low bleed, and superior inertness – even for active compounds such as phenols, and with sensitive detectors such as ECDs, NPDs, and MSDs. It is a good general purpose column for solvents, Freon® fluorocarbons, alcohols, ketones, silanes, glycols, and drugs of abuse. An excellent column for confirmation of phenols, nitrosamines, organochlorine pesticides, chlorinated hydrocarbons, and chlorophenoxy herbicides when paired with an Elite-5 column.

Features and Benefits

- Temperature Range: 40 °C to 320/340 °C
- Equivalent to USP G6 phase

Elite-200 Structure



| ID (mm) | df (µm) | Temp Limits (°C) | 15 m Part No. | 30 m Part No. | 60 m Part No. |
|---------|---------|------------------|-----------------|-----------------|-----------------|
| 0.25 | 0.10 | -20 to 320/340 | N9316616 | N9316617 | |
| | 0.25 | -20 to 320/340 | N9316618 | N9316619 | |
| | 0.50 | -20 to 310/330 | N9316620 | N9316621 | |
| | 1.00 | -20 to 290/310 | N9316622 | N9316623 | N9316624 |
| 0.32 | 0.25 | -20 to 320/340 | N9316625 | N9316626 | |
| | 0.50 | -20 to 310/330 | N9316627 | N9316628 | |
| | 1.00 | -20 to 290/310 | N9316629 | N9316630 | N9316631 |
| | 1.50 | -20 to 280/300 | N9316632 | N9316633 | N9316634 |
| 0.53 | 0.25 | -20 to 310/330 | N9316635 | N9316636 | N9316637 |
| | 0.50 | -20 to 300/320 | N9316638 | N9316639 | N9316640 |
| | 1.00 | -20 to 290/310 | N9316641 | N9316642 | N9316643 |
| | 1.50 | -20 to 280/300 | N9316644 | N9316645 | N9316646 |
| | 3.00 | -20 to 260/280 | N9316647 | N9316648 | N9316649 |