

HPLC Accessories

Postcolumn Reactor

Postcolumn Reaction Single Bead String Reactors

Description	Cat. No.	Qty
Acid Washed	59204	1 ea
Acid Washed/Silanized	59205	1 ea

Postcolumn Reaction Glass Beads

Description	Cat. No.	Qty
75 μ m, acid-washed	59200-U	25 g
250 μ m, acid-washed	59202	25 g
75 μ m, acid-washed/silanized	59201	25 g
250 μ m, acid-washed/silanized	59203	25 g

Postcolumn Reaction Knitted Capillary Delay Tubes

for use with water jacket, 58450-U

Description	Cat. No.	Qty
10 ft (3 m) \times I.D. 0.5 mm	59206	1 ea
10 ft (3 m) \times I.D. 0.8 mm	59207	1 ea

Postcolumn Reaction TFE PTFE Tubing

O.D. (in.)	I.D. (in.)	Cat. No.	Pkg
L 10 ft			
1/16	0.031	58700-U	1 ea
1/16	0.023	58701	1 ea
1/16	0.012	58702	1 ea

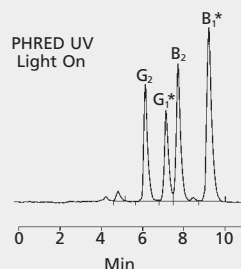
Postcolumn Reaction System Accessories

Description	Cat. No.	Qty
Column Water Jacket	58450-U	1 ea
Union	22997-U	1 ea
Glass Wool	20411	50 g
SSI™ LO-Pulse™ Damper	58455	1 ea
Tee	58283	1 ea
Guard Column Hardware Kit	58319	1 kit

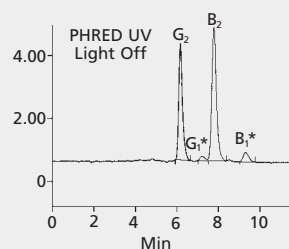
Glass Wool

Description	Cat. No.	Qty
Pesticide Grade (Silanized)	20409	10 g
Pesticide Grade (Silanized)	20409	10 g
	21688-U	100 g
Silanized	20411	50 g
	20410	250 g
Silanized	20411	50 g
Phosphoric Acid Treated	20383	50 g
Non-Treated	20384	50 g

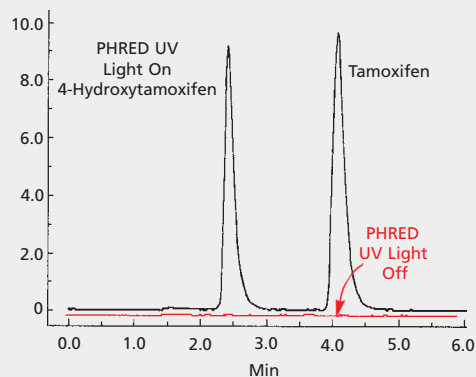
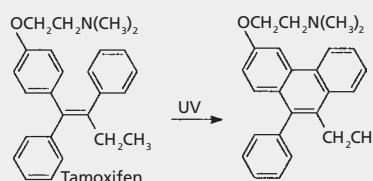
PHRED: Photochemical Reactor Enhanced Detection



* Requires derivatization for fluorescence detection. By replacing chemical derivatization, photochemical derivatization simplifies this procedure.



* Requires derivatization for fluorescence detection. By replacing chemical derivatization, photochemical derivatization simplifies this procedure.



References

1. C. Wolf, R. W. Schmid, *J. Liq. Chromatogr.* **13**: 2207 (1990).
2. L. Dou, I. S. Krull, *Anal. Chem.* **62**: 2599 (1990).
3. W. J. Bachman, J. Stewart, *LC/GC* **7**: 38 (1989).
4. I. S. Krull, C. M. Selavka, M. Lookabaugh, W. R. Childress, *LC/GC* **7**: 758 (1989).
5. *The Reporter* XII, #4, pp. 6-7.
6. H. Joshua, *American Laboratory* April 1995, p. 361.
7. *The Reporter* Vol. 16, no 3, p. 9.

References 1-4, 6 not available from Supelco