

DisQuE Sample Preparation Solutions for QuEChERS



QuEChERS (an acronym for Quick, Easy, Cheap, Effective, Rugged, and Safe) methods offer a simple and straightforward sample preparation technique ideal for multi-residue analysis for pesticides, veterinary drugs, and mycotoxins in a wide variety of food and agricultural products. DisQuE™ Dispersive Sample Preparation Products are conveniently packaged with pre-weighed sorbents and buffers in pouches and tubes as described in regulatory methods and protocols.



These products offer several advantages over traditional sample preparation techniques:

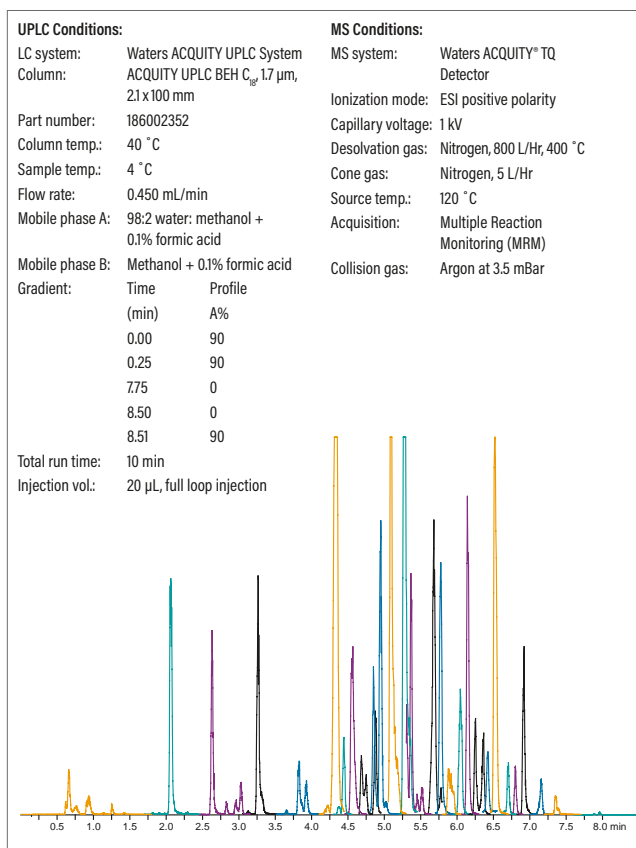
- Simplified QuEChERS protocols
- Decreased sample preparation time
- Efficient and cost effective sample preparation
- Consistent, high quality sorbents, and packaging

DisQuE KITTED SOLUTIONS

Complete solutions and kitted methods add value to your laboratory function by addressing the need for simple, easy-to-follow protocols that require very little training.

Waters offers several different versions of pre-packaged QuEChERS kits which conform to both AOAC and CEN protocols.

Chromatogram Showing 402 Pesticide Residues at 10 ppb ng/g In One 10 Minute Run



Ordering Information

DisQuE Dispersive Sample Preparation Kits

Description	P/N
DisQuE Kits	
DisQuE AOAC Dispersive SPE Kit-Pouch Format <ul style="list-style-type: none"> ■ Pouch: 1.5 g sodium acetate and 6 g MgSO₄ ■ 50 mL Tube: Empty ■ 2 mL Tube: 150 mg MgSO₄ and 50 mg PSA 	176002922
DisQuE CEN Dispersive SPE Kit-Pouch Format <ul style="list-style-type: none"> ■ Pouch: 1 g trisodium citrate dihydrate, 0.5 g disodium hydrogencitrate sesquihydrate, 1 NaCl and 4 g MgSO₄ ■ 50 mL Tube: Empty ■ 2 mL Tube: 150 mg MgSO₄, 25 mg PSA, and 25 mg C₁₈ 	176002923
DisQuE AOAC Dispersive SPE Kit <ul style="list-style-type: none"> ■ Tube 1: 50 mL tube containing: 1.5 g sodium acetate and 6 g MgSO₄ ■ Tube 2: 2 mL tube containing: 150 mg MgSO₄ and 50 mg PSA 	176001676
DisQuE CEN Dispersive SPE Kit <ul style="list-style-type: none"> ■ Tube 1: 50 mL tube containing: 1 g trisodium citrate dihydrate, 0.5 g disodium hydrogencitrate sesquihydrate, 1 g NaCl and 4 g MgSO₄ ■ Tube 2: 2 mL Tube containing: 150 mg MgSO₄, 25 mg PSA, and 25 mg C₁₈ 	176001903