

HSPgel COLUMNS

Waters HSPgel™ SEC Columns are optimized for high-speed polymer analysis in aqueous solution. HSPgel Columns reduce solvent consumption, increase throughput, and provide accurate molecular-weight data for any room-temperature analysis. The column dimensions are 6.0 × 150 mm.

Ordering Information

HSPgel Columns for High-Speed SEC Analysis*

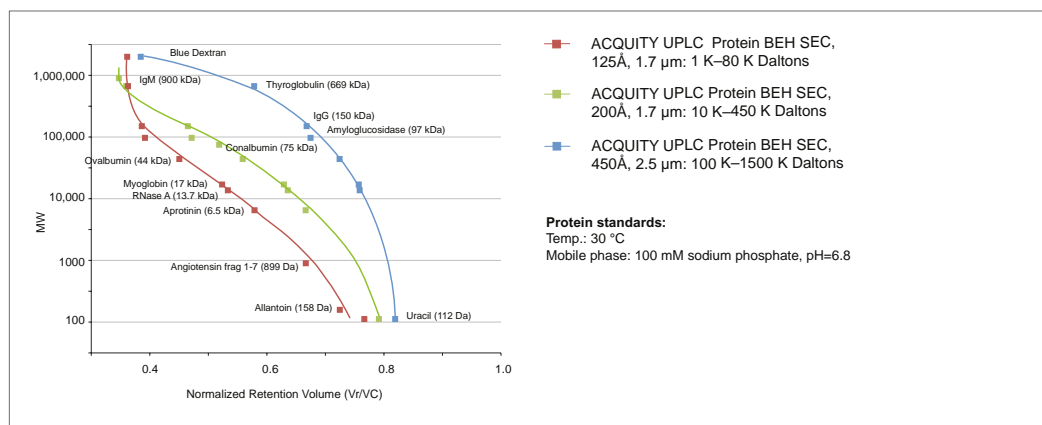
Description	MW Range	Solvent	Particle Size	P/N
HSPgel AQ 2.5	500–2000	Water	4 µm	186001785
HSPgel AQ 3.0	1000–60,000	Water	4 µm	186001786
HSPgel AQ 4.0	10,000–400,000	Water	6 µm	186001787
HSPgel AQ 5.0	50,000–4,000,000	Water	7 µm	186001788
HSPgel AQ 6.0	100,000–10,000,000	Water	9 µm	186001789
HSPgel AQ MB-H	500–10,000,000	Water	9 µm	186001790

*Exclusion limits for AQ series extrapolated from highest MW PEO standard (~900,000).

ACQUITY UPLC PROTEIN SEC COLUMNS

ACQUITY UPLC Protein SEC Columns are packed with ethylene-bridged hybrid (BEH), diol-coated particle technology. Manufacturers of biotherapeutics and biosimilars can choose the most effective pore size for their application: 125, 200, and 450 Å.

Calibration Curves on ACQUITY UPLC Protein BEH SEC, 125 Å, 200 Å, and 450 Å Columns



Ordering Information

ACQUITY UPLC Protein BEH SEC 4.6 mm Column

Pore Size	MW Range	Particle Size	Column Length				
			30 mm Guard	150 mm	300 mm	150 mm w/Standard	300 mm w/Standard
125 Å	1K - 80K Da	1.7 µm	186006504	186006505	186006506	176003906	176003907
200 Å	10K - 450K Da	1.7 µm	186005793	186005225	186005226	176003904	176003905
450 Å	100K - 1500k Da	2.5 µm	186006850	186006851	186006852	176002996	176002997
125 Å	1K - 80K Da	1.7 µm	—	186008471*	—	—	—
ELSD outlet tubing (0.004" I.D. × 6" length)							430001562
0.005 × 1.75" SEC UPLC connection tubing, 2/pk							186006613

*ACQUITY UPLC Protein BEH SEC 2.1 x 150 mm Column.

For more information on ACQUITY UPLC Protein SEC Columns, refer to page 276.