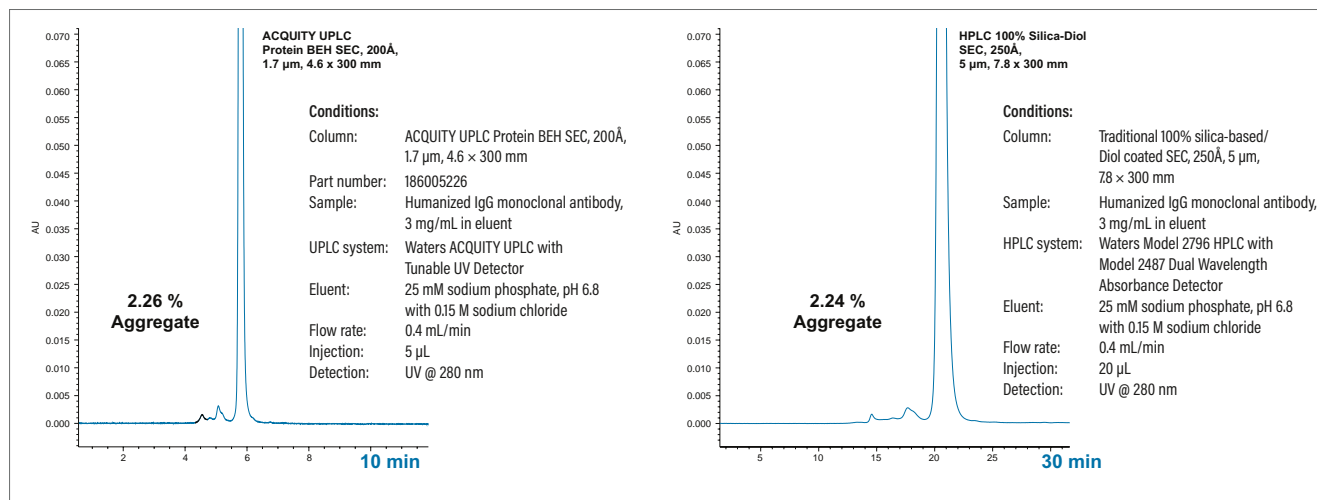


Comparative UPLC-Based SEC Benefits vs. Use of Traditional HPLC SEC for Biotherapeutic Characterization



Compared with traditional HPLC-based SEC technology, Waters ACQUITY UPLC BEH SEC Technology delivers a comparable determination of mAb aggregate vs. monomer content in significantly less time, promoting higher sample throughput.

WATERS INSULIN HMWP HPLC AND UHPLC COLUMNS

We designed our Insulin HMWP Column for use in the manufacture and quality control of insulin products. This column is tested for its performance analyzing impurities whose molecular masses exceed that of insulin.

Ordering Information

Waters Insulin HMWP SEC HPLC and UHPLC Columns

Description	Dimension	P/N
Waters Insulin HMWP Column	7.8 x 300 mm	WAT201549
Protein-Pak 125 Sentry Guard Column, 2/pk (requires holder)	3.9 x 20 mm	186000926
Sentry Universal Guard Column Holder	—	WAT046910

Tested to perform in the method published in PharmaEuropa Vol. 8, No. 3, September 1996.