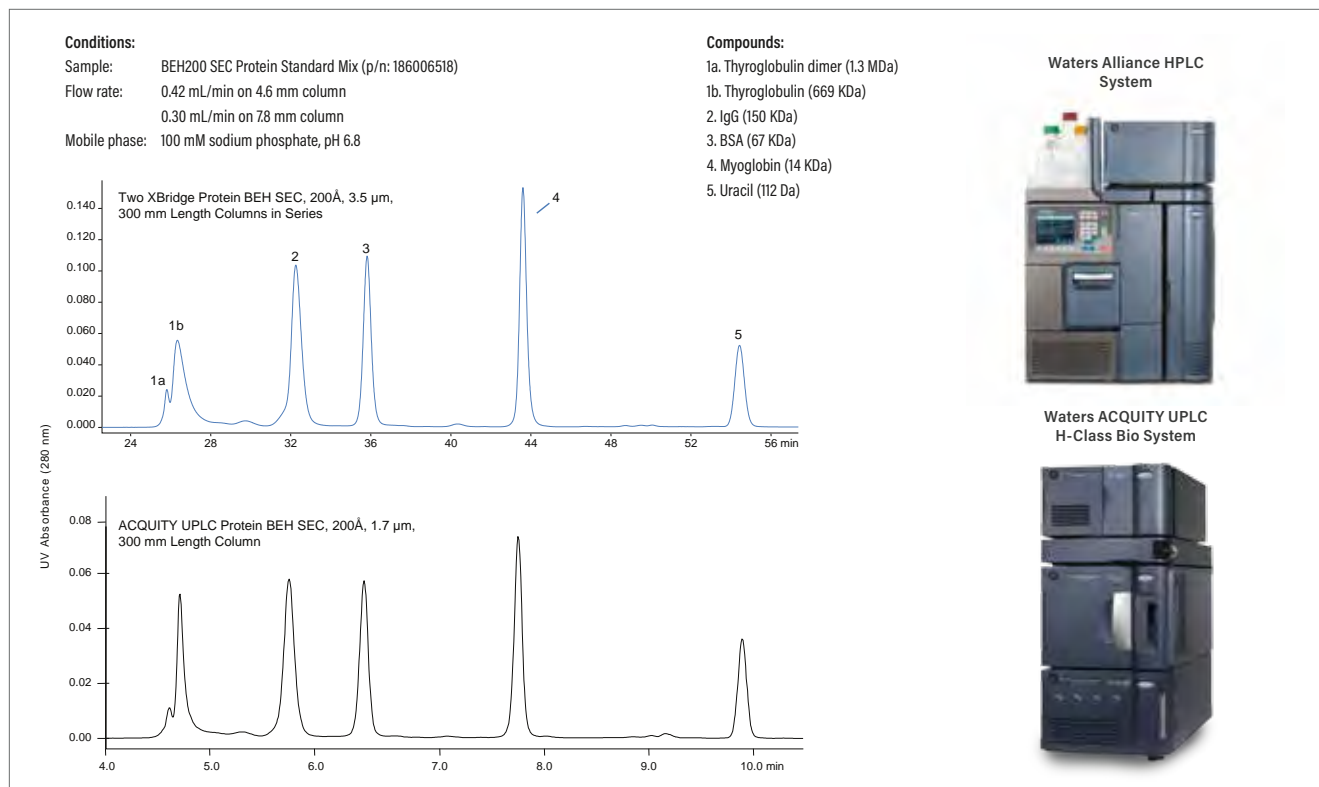


Scalable Separations Using UPLC- vs. HPLC-Based SEC Columns



Comparison of separations of Waters BEH200 SEC Protein Standard Mix (p/n: 186006518) on two XBridge Protein BEH SEC, 200Å, 3.5 µm HPLC Columns (300 mm length × 7.8 mm I.D.) run in series using an Alliance HPLC System (top panel) and an ACQUITY UPLC Protein BEH SEC, 200Å, 1.7 µm Column (300 mm length × 4.6 mm I.D.) using an ACQUITY UPLC H-Class Bio System (bottom panel). The flow rates were scaled, on the basis of particle diameter and column I.D., to 0.42 mL/min for the two HPLC columns run in series, and 0.3 mL/min for the UPLC column. Sample loads were also adjusted, for column volume.

Ordering Information

XBridge Protein BEH SEC Columns and Guard Kits

	Dimension	Kit P/N ¹
Particle Size: 3.5 µm		
BEH SEC, 450Å	7.8 mm × 30 mm	176003597*
	7.8 mm × 150 mm	176003598
	7.8 mm × 300 mm	176003599

*Guard column.

¹ Kit includes Peptide BEH SEC, 450Å Column plus one vial of BEH450 SEC Standard, p/n: 186006842.

	Dimension	Kit P/N ¹
Particle Size: 3.5 µm		
BEH SEC, 200Å	7.8 mm × 30 mm	176003594*
	7.8 mm × 150 mm	176003595
	7.8 mm × 300 mm	176003596

*Guard column.

¹ Kit includes Peptide BEH SEC, 200Å Column plus one vial of BEH200 SEC Standard, p/n: 186006518.

	Dimension	Kit P/N ¹
Particle Size: 3.5 µm		
BEH SEC, 125Å	7.8 mm × 30 mm	176003591*
	7.8 mm × 150 mm	176003592
	7.8 mm × 300 mm	176003593

*Guard column.

¹ Kit includes Peptide BEH SEC, 125Å Column plus one vial of BEH125 SEC Standard, p/n: 186006519.

Tubing and End-fittings

Description	P/N
Straight Connection Tubing and End-fittings for XBridge Protein BEH SEC Column	WAT022681
U-Bend Connection Tubing and End-fittings for XBridge Protein BEH SEC Column	WAT084080